



1951



OPAL

MAIN DESCRIPTION

CLASS	TUG/ SUPPLY VESSEL/ FIRE FIGHTING SHIP 1/ SPECIAL PURPOSE SHIP
PORT OF REGISTRY	VALLETTA
CALL SIGN	9HA2265
FLAG	MALTA
IMO NUMBER	9489479
DELIVERED	2009
CLASSIFICATION	PRS
OPERATING AREA	A1+A2+A3
BOLLARD PULL	66 T
CRUISING SPEED	10 KNOTS
MAXIMUM SPEED	13 KNOTS

TANKS CAPACITIES & PUMPS

FUEL OIL CAPACITY	540 m ³
FRESH WATER CAPACITY DRILL WATER/	372,13 m ³
WATER BALAST CAPACITY	258,4 m ³
CEMENT TANK CAPACITY	187 m ³
DISCHARGE RATE FUEL	150 m ³ /hr
DISCHARGE RATE FRESH WATER	125 m ³ /hr
DISCHARGE RATE DRILL WATER	100 m ³ /hr
BULK CEMENT	2 x 13 m ³ /min

MACHINERY

MAIN ENGINES	2 / CAT 3516B-HD
POWER	2 x 1920 kW
PROPELLER	SHIP TWIN SCREW CPP
BOW THRUSTER	1x 371 kW TUNNEL CPP 59 kN

DECK & TOWING EQUIPMENT

TOWING/AH WINCH	DOUBLE DRUM, ELECTRO HYDRAULIC, MENTRADE
DRUMS CAPACITY	2 x 1000 m / 56 mm
LINE PULL	150 T
BRAKE HOLDING	200 T
STORAGE REEL	1000 m / 56 mm
CAPSTAN	2 x 5 TONS
TUGGER WINCH	2 x 10 TONS
STERN ROLLER	4.50 x 1,6 m 180 mt SWL
KAMFORK	SWL 300 mt
TOWING PINS	2 WITH TURNTABLE TOP FLAPS
DECK CRANE	HYDRAULIC CRANE, TYPE: EFFER 65000 / 5SL SWL: 3.18 T x 15.95m, 10.35 t x 5.45m

MAIN DIMENSIONS

LOA	59,25m
BEAM	14,95 m
MAX DRAUGHT	4,95 m
GRT	1678
NRT	503
DWT	1337
DECK STRENGTH	7.5 T/m ²
DECK CARGO	500 T
CLEAR DECK AREA	320 m ² (28 x 11,7 m)
TOTAL ACCOMODATION	4 cabins 1 berth 3 cabins 2 berths 8 cabins 4 berths Hospital

FIFI AND ANTI POLLUTION

FIFI	CLASS 1
CAPACITY	2 x 1550 m ³ /hr
MONITORS	2 x 1200 m ³ /hr ONE WITH 300 m ³ /hr FOAM
OIL DISPERSANT	2 SPRAY BOOMS 6 m



1951

OPAL



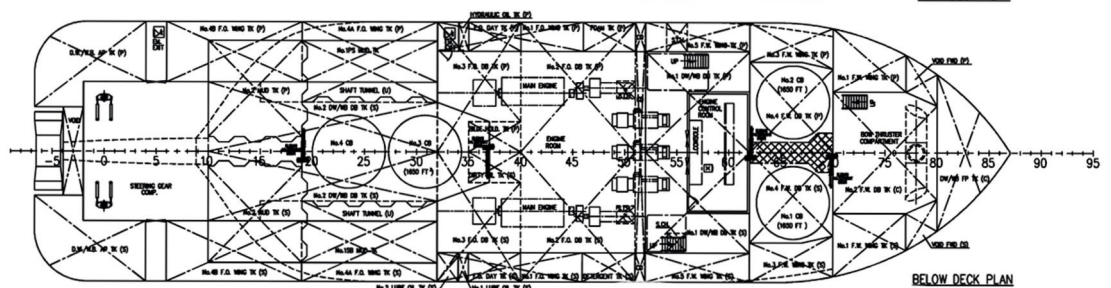
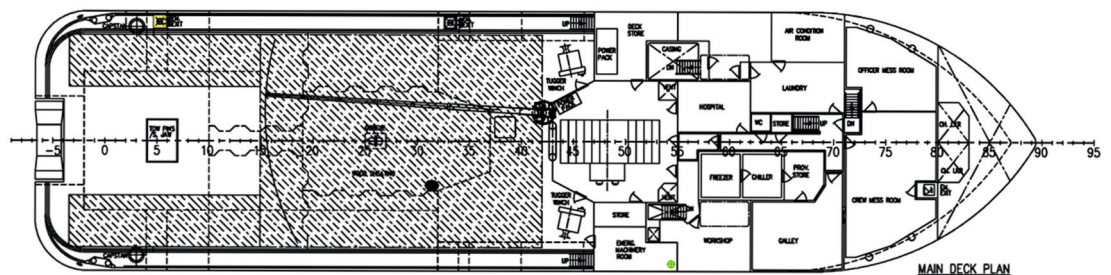
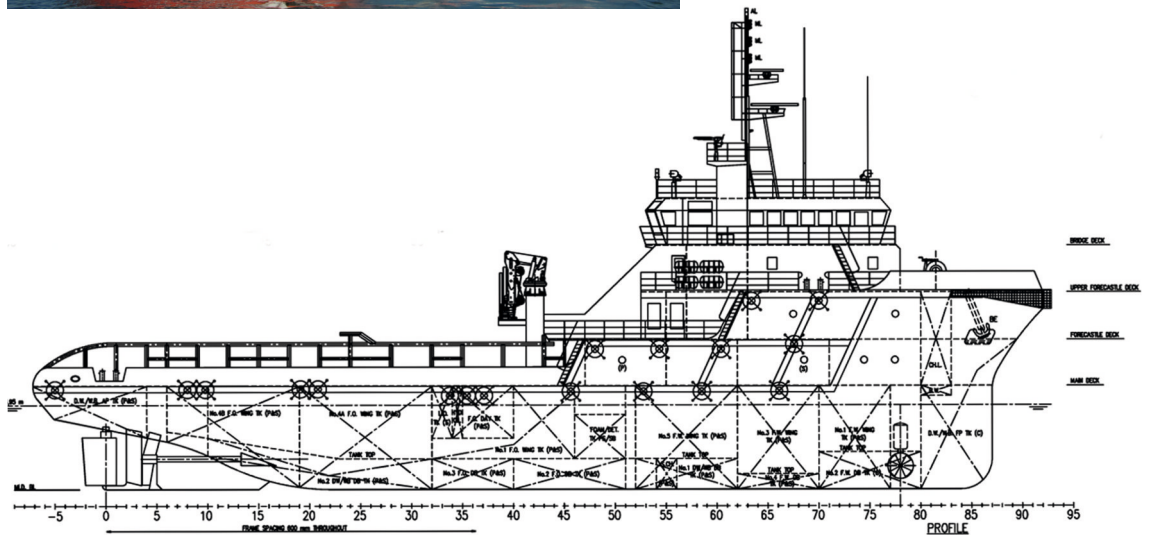
ISO 9001



AC 014



AHTS Ocean Going Tug



vessels particulars believed to be correct but not guaranteed

Polskie Ratownictwo Okrętowe Sp. z o.o.
Miodowa 26, 81-558 Gdynia, Polska
+48 601 630 048, +48 515 030 386, +48 726 301 030
chartering@progdynia.pl