



1951



MAJA

MAIN DESCRIPTION

| | |
|------------------|---|
| CLASS | *KM FLOATING |
| TYPE | CRANE III [1] L3 SELF PROPELLED, REVOLVED FLOATING CRANE |
| PORT OF REGISTRY | GDYNIA |
| CALL SIGN | SQKR |
| FLAG | POLISH |
| IMO NUMBER | 8829127 |
| DELIVERED | 1980 |
| CLASSIFICATION | PRS |

MAIN DIMENSIONS

| | |
|-----------------|-------------|
| LOA | 55,49 m |
| BREADTH | 25,02 m |
| DRAUGHT | 2,85 m |
| DRAUGHT AT WORK | UP TO 4,5 m |
| GRT | 1964 |
| NRT | 589 |

CRANE

| | |
|---------------------|------------------|
| MAIN HOOK | 330 T |
| SMALL HOOK | 100 T |
| MAIN HOOK SPEED | 0,15 - 3,5 m/min |
| SMALL HOOK SPEED | 0,15 - 5,5 m/min |
| 360° REVOLVING TIME | 4,5 min |

DECK CARGO CAPACITY

| | |
|---------------------|---------------------------|
| DECK CARGO CAPACITY | 800 T |
| CARGO DECK AREA | 19,2 x 19,2 m |
| CARGO DECK STRENGTH | 6 - 10 T / m ² |

DECK EQUIPMENT

| | |
|-----------------|---|
| MOORING WINCHES | 4 |
| ANCHOR WINCHES | 4 |

TANKS CAPACITY

| | |
|---------------|--------------------|
| FUEL OIL | 94 m ³ |
| POTABLE WATER | 25 m ³ |
| BALLAST WATER | 200 m ³ |

WORK CONDITIONS

| | |
|---------------|---|
| WORK OF CRANE | FORCE OF WIND UP TO 5 °B HIGHT OF WAVE UP TO 2 m |
| SAILING | FORCE OF WIND UP TO 5°B |
| MAX. SPEED | 5 KNOTS |

ENGINES AND PROPULLSION

| | |
|--------------|------------------------------|
| MAIN ENGINES | 3 x ELECTRIC MOTOR |
| POWER | 3 x 315 kW |
| ALTERNATORS | 2 x 1250 kVA |
| PROPELLERS | 3 CYCLOIDAL ON AFT OF PONTON |

SUBMERSIBLE SALVAGE PUMPS, ACCOMODATION UP TO 13 PERSONS INCLUDING CREW

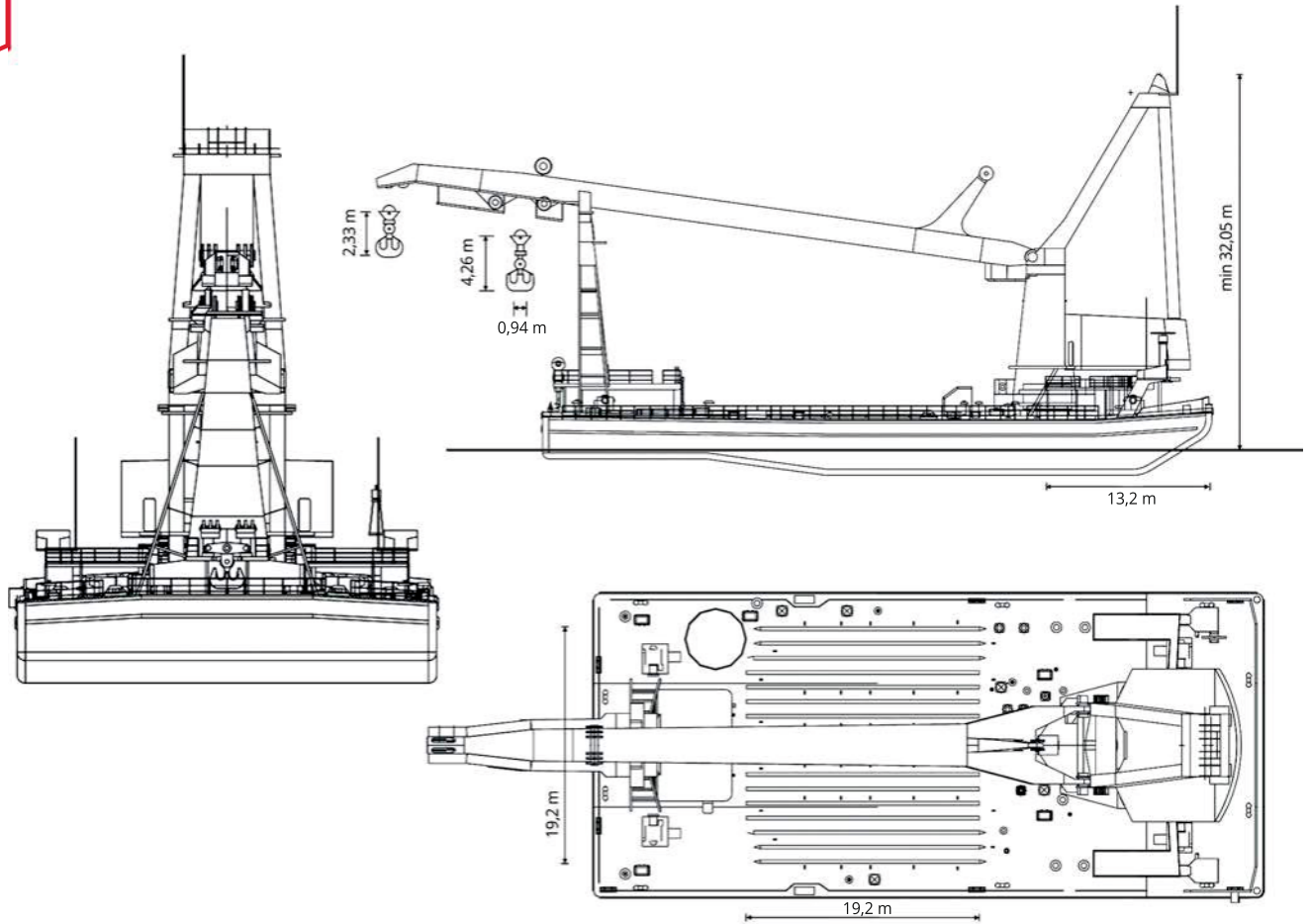
THANKS TO HER CONSTRUCTION SHE IS ABLE TO:

- LIFT CARGOES OF WEIGHT TO 330 TONS (INCLUDING LIFTING EQUIPMENT: SLINGS SHACKLES, BEAMS ETC.),
- ROTATE THE CARGO HORIZONTALLY,
- USING TWO HOOKS - 330 TONS AND 100 TONS - A CARGOES CAN BE ROTATED ALSO VERTICALLY,
- TRANSPORT OF THE CARGO INSIDE THE CLOSED WATERS AND PORTS ON THE ONE HOOK OR TWO HOOKS,
- UNLIKE THE SHEERLEG, TRANSPORT A CARGO UP TO 800 TONS ON THE DECK THROUGH THE OPEN SEA.



1951

MAJA



MAIN HOOK 330 T - CRANE RADIUS FROM AXIS OF ROTATION - SIDE PROGRAM

| | 330 T | | 300 T | | | | 275 T | | | | 220 T | | | | 165 T | | | | 132 T | | | | | | | |
|------------------------------|-------|------|-------|------|------|------|-------|------|------|------|-------|------|------|------|-------|------|------|------|-------|------|------|------|------|------|------|------|
| HEIGHT ABOVE WATER LEVEL (m) | 46.0 | 46.0 | 45.3 | 44.3 | 43.7 | 43.0 | 42.3 | 41.5 | 40.8 | 40.4 | 39.4 | 38.6 | 38.0 | 37.4 | 36.7 | 36.0 | 35.1 | 34.2 | 33.3 | 32.0 | 30.2 | 29.6 | 28.7 | 27.4 | 25.4 | 24.0 |
| RADIUS (m) | 15.0 | 15.0 | 16.0 | 17.0 | 18.0 | 18.8 | 20.0 | 21.0 | 22.0 | 23.0 | 24.0 | 25.0 | 26.0 | 27.4 | 28.0 | 29.0 | 30.0 | 31.0 | 32.0 | 33.0 | 34.2 | 35.0 | 36.0 | 37.0 | 38.0 | 38.7 |

radius from pontoon side = radius -12,8m

MAIN HOOK 330 T - CRANE RADIUS FROM AXIS OF ROTATION - BOW PROGRAM (0-17 DEGREES FROM SYMMETRY LINE)

| | 330 T | | | | | | | | | | 275 T | | | 220 T | | | 165 T | | | | | | | |
|------------------------------|-------|------|------|------|------|------|------|------|------|------|-------|------|------|-------|------|------|-------|------|------|------|------|------|------|------|
| HEIGHT ABOVE WATER LEVEL (m) | 46.0 | 45.3 | 45.0 | 44.5 | 44.0 | 44.0 | 43.5 | 43.0 | 42.5 | 42.0 | 41.0 | 40.5 | 40.5 | 40.0 | 39.0 | 38.0 | 37.0 | 36.0 | 35.0 | 34.0 | 32.5 | 31.0 | 29.5 | 29.0 |
| RADIUS (m) | 15.0 | 16.0 | 17.0 | 18.0 | 19.0 | 20.0 | 21.0 | 22.0 | 23.0 | 24.0 | 25.0 | 26.7 | 28.0 | 29.0 | 29.7 | 31.0 | 32.0 | 32.7 | 34.0 | 35.0 | 36.0 | 37.0 | 38.0 | 38.7 |

radius from bow of pontoon = radius -13,2m

HOOK 100 T - CRANE RADIUS FROM AXIS OF ROTATION

| | 100 T | | | | | | | | | | | | | | | | | | | | | | | | |
|------------------------------|-------|------|------|------|------|------|------|------|------|------|------|------|------|------|------|------|------|------|------|------|------|------|------|------|------|
| HEIGHT ABOVE WATER LEVEL (m) | 60 | 59 | 58 | 57 | 56 | 55 | 54 | 53 | 52 | 51 | 50 | 49 | 48 | 47 | 46 | 45 | 44 | 43 | 42 | 41 | 40 | 39 | 38 | 37 | 36 |
| RADIUS (m) | 18.0 | 19.2 | 20.5 | 21.7 | 22.6 | 24.0 | 25.2 | 26.6 | 27.8 | 29.0 | 30.2 | 31.4 | 32.6 | 34.0 | 35.2 | 36.4 | 37.6 | 39.0 | 40.2 | 41.4 | 42.6 | 44.0 | 45.0 | 46.3 | 47.7 |

radius from pontoon side = radius -12,8m

tables do not contain pontoon list

vessels particulars belived to be correct but not guaranteed

Polskie Ratownictwo Okrętowe Sp. z o.o.
 Miodowa 26, 81-558 Gdynia, Polska
 +48 726 301 030, +48 601 630 048, +48 515 030 386
 chartering@progdynia.pl