



1951



AMBER II

MAIN DESCRIPTION

CLASS	TUG/SUPPLY
PORT OF REGISTRY	VALLETTA
CALL SIGN	9HLD9
FLAG	MALTA
IMO NUMBER	9425423
DELIVERED	2008
CLASSIFICATION	PRS
OPERATING AREA	A1+A2+A3
BOLLARD PULL	65 T
CRUISING SPEED	10 KNOTS
MAXIMUM SPEED	13 KNOTS

TANKS CAPACITIES & PUMPS

FUEL OIL CAPACITY	592 m ³
FRESH WATER CAPACITY	215 m ³
DISCHARGE RATE FUEL	60 m ³ /h
DISCHARGE RATE FRESH WATER	60 m ³ /h

MACHINERY

MAIN ENGINES	2/CAT 3516B-HD
POWER	2 x 1920 kW
PROPELLER	SHIP TWIN SCREW CPP
BOW THRUSTER	1x 316 kW

DECK & TOWING EQUIPMENT

TOWING/AH WINCH	DOUBLE DRUM, ELECTRO HYDRAULIC, MENTRADE
DRUMS CAPACITY	2 x 1000 m/ 54mm
LINE PULL	150 T
BRAKE HOLDING	200 T
STORAGE REEL	1000 m/ 54mm
CAPSTAN	2 x 5 T
TUGGER WINCH	2 x 10 T
STERN ROLLER	5,0 m x 1,6 m SWL 200 T
KARMFORK	SWL 300 mT
TOWING PINS	WITH TURNABLE TOP FLAP
DECK CRANE	PALFINGER HYDRAULIC CRANE - SWL: 157 T x 12.3m, 4.68 T x 4.6m
CHAIN STOPPER	1 x KARMFORK KARMOY

MAIN DIMENSIONS

LOA	48,00m
BEAM	13,20 m
MAX DRAUGHT	4,50 m
GRT	975
NRT	292
DWT	767
DECK STRENGTH	7 T/m ²
DECK CARGO	200 T
CLEAR DECK AREA	220 m ² ABT. 21.7 x 10,2 m
TOTAL ACCOMMODATION	5 cabins 1 berth 1 cabin 2 berths 6 cabins 4 beths Hospital, office

ANTI POLLUTION

OIL DISPERSANT	20,34 m ³
----------------	----------------------



1951

AMBER II



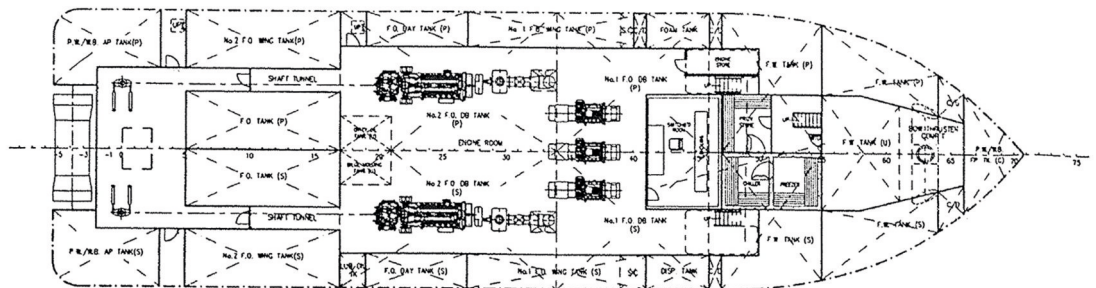
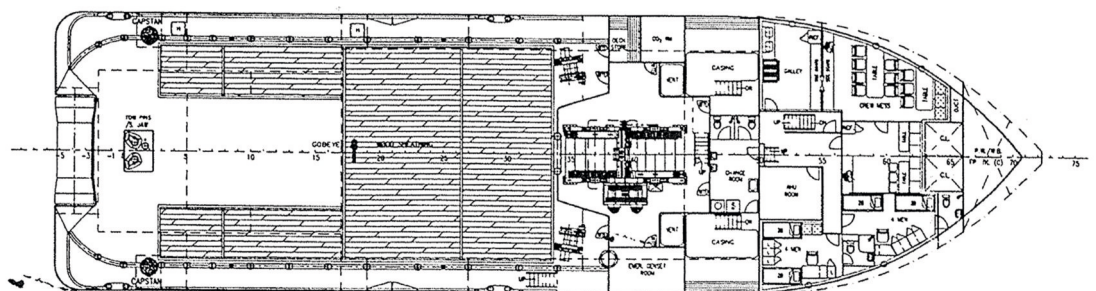
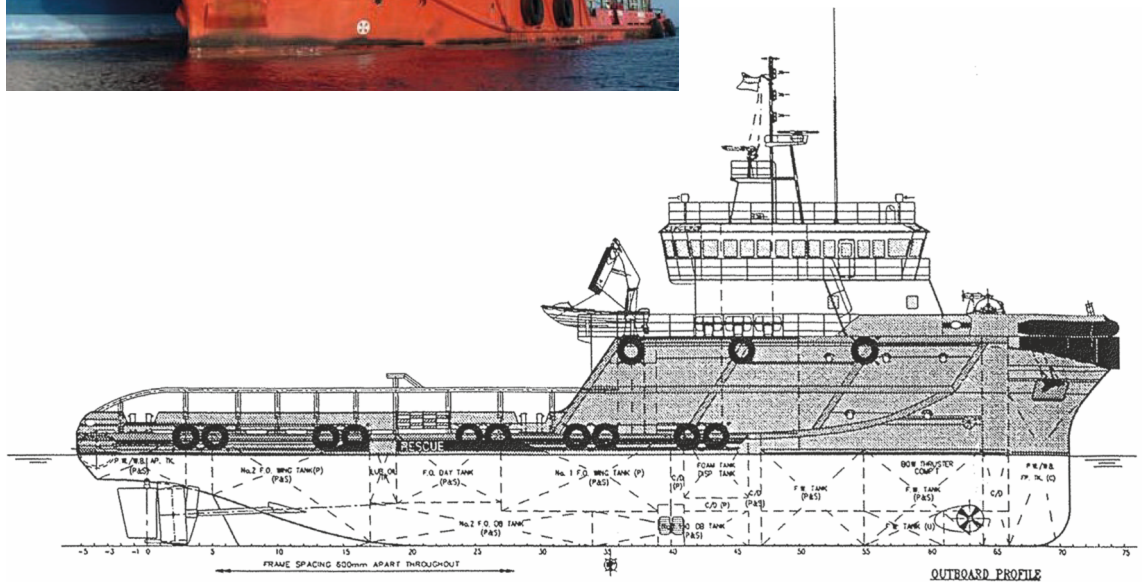
ISO 9001



AC 014



AHTS Ocean Going Tug



vessels particulars believed to be correct but not guaranteed

Polskie Ratownictwo Okrętowe Sp. z o.o.
Miodowa 26, 81-558 Gdynia, Polska
+48 601 630 048, +48 515 030 386, +48 726 301 030
chartering@progdynia.pl